

SENSORY PLAY 2024



What is sensory play?

Sensory play is any activity that stimulates our senses – touch, sight, hearing, smell and taste. It helps children interact with and make sense of the world that surrounds them.

Why is sensory play important?

Sensory play plays an important role in a child's learning and development. Much of our learning comes through our ability to use our senses to retain information.

Sensory play is a lot of fun. It also offers many benefits for child development, including:

- Helping children understand how their actions affect what's around them.
- Supporting brain development, enhancing memory, complex tasks and problem solving.
- Developing fine motor skills through tactile play (useful when children want to hold a pen or use scissors for example).
- Supporting language development, communication and social skills.
- Enhancing memory and observational skills.
- Encouraging creative and independent thinking.
- Emotional regulation by providing a calming effect on children's angry or anxious feelings.

TEE-PEE BOARD



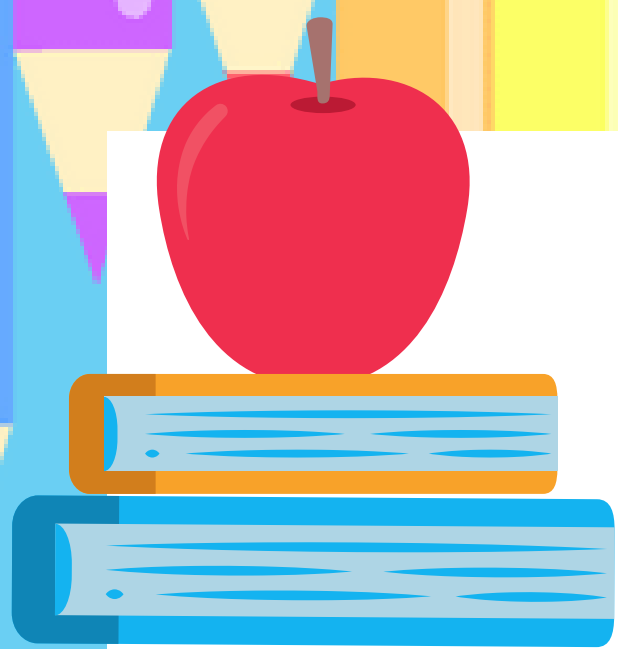


ACTIVITY BOARD



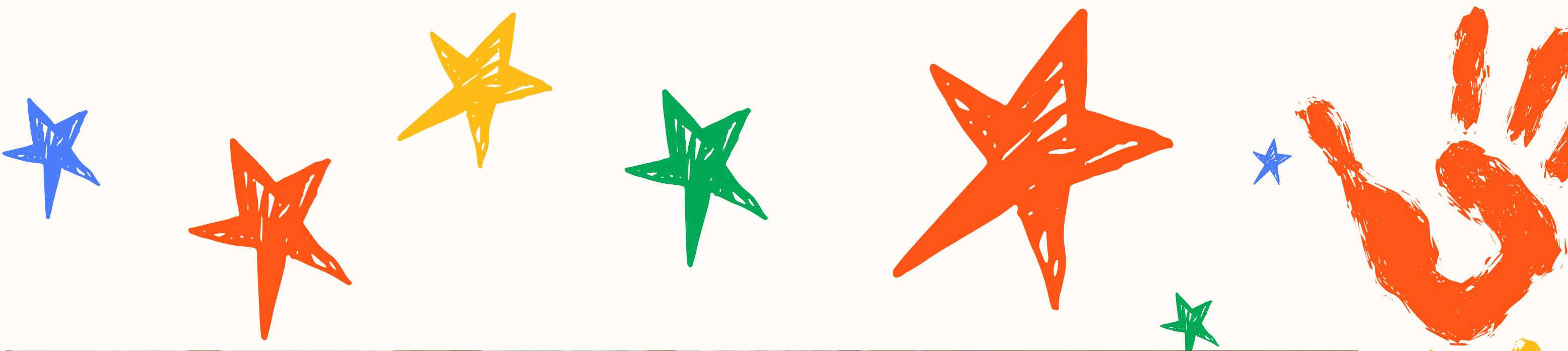
ACTIVITY BOARD



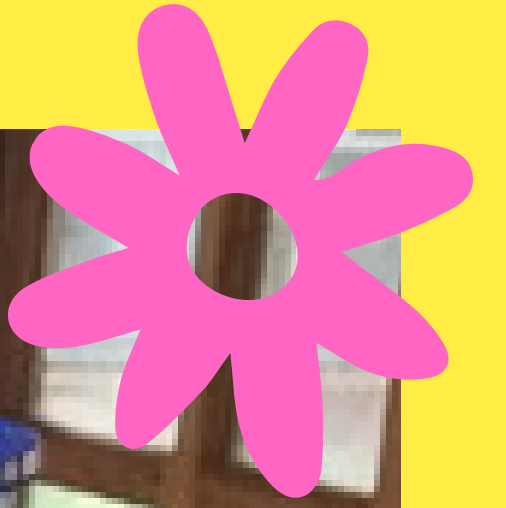


TEE-PEE BOARD











Price list



ACTIVITY BOARDS:

Small 30cm x 30cm R350

Medium 45cm x 45cm R699

Large 60cm x 60cm R1199



ACTIVITY TEE.PEE:

***Please note, the Teepee WITH WHEELS CHOSEN will be flat packed. The bottom "arms" will be added and will be ready for you to drill in. Unfortunately over the years the courier lays them flat to often and then breaks the part that keeps the Teepee open.**

Small 30cmx30cm R499

Medium 45cmx45cm R1000

Large 60cmx60cm R1499



***ACTIVITY TOY ***

Small - 45cm x 45cm R2000

Medium - 45cm x 60 cm R2500

Large - 45cm x 90cm R3000



- Colours can be chosen
- We put the child's name on
- No two boards/boxes will look the same as it is handmade and the items that we put on depends on availability

 **Courier TBC**

Please note cannot be sent with other items

 **2 to 3 weeks leadtime as it is made**

